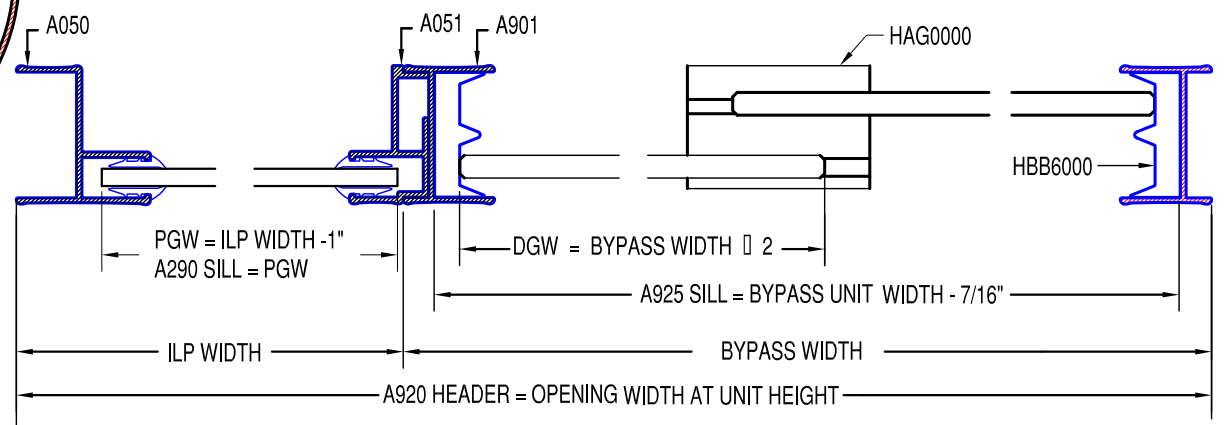


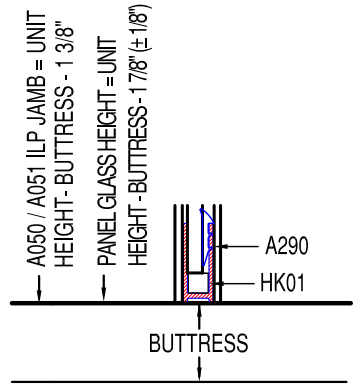
VERTICAL CROSS SECTION

PANEL CROSS SECTION

PGW = OPENING WIDTH - BYPASS WIDTH - 1" (± 1/4")
OR ILP BUTTRESS WIDTH - 1" (± 1/4")



HORIZONTAL CROSS SECTION



BYPASS SPEC F-3

SERIES	BYPASS 1/4" GLASS	GLAZING VINYL			
		TYPE	5/32"	3/16"	1/4"
F000	▶ WITH KWIKSTAL IN-LINE PANEL OR INLINE STEP UP PANEL	SIDE-LITE (VERT)	VK156V	VK188V	VK250V
FRAMELESS					

Coral

P.O. DRAWER 40228 TUSCALOOSA, AL. 35404-0228
(205) 345-1013 * (800) 772-7737 * FAX (800) 255-7320
www.coralind.com